

PORSCHE

50

**911 Targa 4S**  
**Heritage Design Edition**  
Icons of Cool



European models shown. Some options may not be available in the U.S. Some items of equipment are available as extra-cost options only. The availability of models and options may vary from market to market due to local restrictions and regulations. For information on standard and optional equipment, please consult your authorized Porsche dealer. All information regarding construction, features, design, performance, dimensions, weight, fuel consumption and running costs is correct to the best of our knowledge at the time of going to print (3/2020). Porsche reserves the right to alter specifications, equipment and delivery scopes without prior notice. Colors may differ from those illustrated. Errors and omissions excepted. Please visit [www.porsche.com/disclaimer](http://www.porsche.com/disclaimer)

# FOREWORD.

## Dear reader

Lifestyle – a word that is currently used very frequently by many industries. And yet, its literal meaning highlights a principle that has always applied to Porsche: fashion fades, but style never does. This is particularly true for our customers, for whom Porsche has always been more than just a lifestyle. When applied to the design of Porsche, this means: no future without heritage. With every new model, it's important to maintain a connection to the past. There's a little piece of 356 and 911 in every new model. And every new model takes inspiration from the diverse history of our brand. Sometimes it's merely nuances – and yet these shape the character and overall impression of each new design.

With our Heritage Design strategy, we at Porsche are now continuing this approach even more consistently and emotionally, with even greater customer focus. We're bringing back the Porsche brand's most popular design features, colors and materials of the 1950s,

60s, 70s and 80s. Not 1:1, of course, but composed by our designers with great attention to detail, and reinterpreted to perfectly emphasize – and complement – the timeless modern character of the 911.

Every era of Porsche history is exclusively showcased by a limited-edition model. Moreover, we're raising awareness of the topic by means of optional packages that will also be available for many other 911 models. I'm confident that we're therefore reflecting the spirit of the times in the truest sense of the word. In a world of multimedia overload and the daily competition for the latest trend, Heritage Design stands for serenity and familiar memories of an attitude to life.

The commitment to our history is firmly rooted in every member of the design team. Many of my colleagues own a classic 911. I myself favor the 964 generation. From a design perspective, I believe the 911 is quite simply the perfect combination of classic design and state-of-the-art technology.

The Porsche Exclusive Manufaktur has once again managed to do just that with the new 911 Targa 4S Heritage Design Edition, based on our designs and with a great deal of craftsmanship. No matter how often we viewed the vehicle together during the development process, we were always in agreement: we're bringing back a lifestyle of cool to the road, while creating something new. Icons of Cool.

## Have fun and enjoy the drive!

**Michael Mauer**



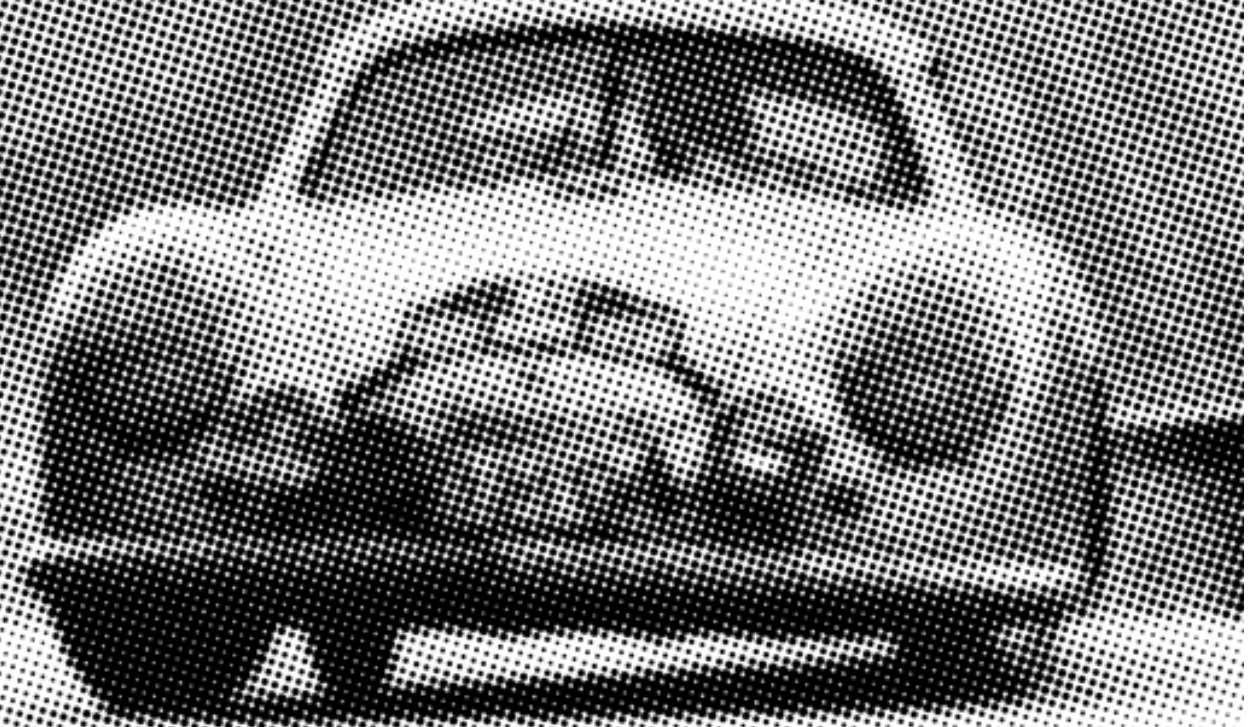
Michael Mauer has headed the Porsche Design Department since 2004. He studied automotive design at Pforzheim University from 1982 to 1986. It is under his leadership that the current generations of all Porsche model ranges were created, as well as the 918 Spyder and most recently the electric sports car, the Taycan.



# TIMES COME AND GO. *ICONS REMAIN.*

**Beliefs that made history. An attitude to life that shaped generations. Songs that got under your skin. Design that won the battle against time.**

Wouldn't it be great if we could repeat all this? If we could give the past a new lease of life? And revive the spirit of the times? The good news is, we can. Because what stirred people's hearts and made them rejoice is returning in the form of the Porsche Heritage Design models. Inspired by the spirit of the 1950s, 60s, 70s and 80s, they're bringing the lifestyle of bygone times back to the road. And honoring iconic Porsche classics with numerous design highlights.



It all began in the 1950s – the era in which 'made in Germany' sports car emotion asserted itself on the world's roads and race tracks. The starting flag came down with the legendary Porsche 356, which along with the revolutionary 911 Targa was the inspiration for our first model – the 911 Targa 4S Heritage Design Edition. Equipped with state-of-the-art sports car technology and historic design features, this Edition revives what was widely regarded as cool. And propels it towards the future.

**In short: thanks to its distinctive design highlights, the 911 Targa 4S Heritage Design Edition is an icon that is as fascinating today as its role models were back then.**





# CONTENTS.

8

## THE BIRTH OF ICONS

The 1950s

22

## SHAPING ICONS

From drawing board to the road

76

## TIMELESS ICON

Porsche Design Timepieces

14

## ICONIC VICTORIES

Porsche in the 1950s

28

## AN ICON OF COOL

911 Targa 4S Heritage Design Edition

78

## ICONS AT WORK

Behind the scenes





# SWINGING HIPS: *CERTAINLY NOT THE ONLY DYNAMIC OF A NEW ERA.*

**A classic design language. Idols that become icons. The start of the TV age.**

The 1950s. A time that flouted convention. Because the world was facing a conflict between traditions, values, functionality and future visions. And in the middle of all this? A population that wanted out, wanted to be free, different and self-determined. An attitude that made itself heard. With a heavy beat and an offbeat, a new sense of rhythm and provocative lyrics. Rock 'n' roll not only created an entirely new music genre. But also an attitude to life, shaped by change and the onset of a new era. Putting an end to bourgeois mediocrity. Breaking with convention. Releasing the chains of the past. Being free. Venturing into new territory. This was the motto.

And so the population gained a new lease of life, showed courage, opened the throttle. Especially when it came to their hips. Because they swung them –

at home, at cocktail parties, in dance halls. Other, hitherto unheard sounds rang out from loudspeakers, portable radios, jukeboxes.

**For some: nothing but noise.  
For others: a reason to turn up the volume.  
As high as possible.**

A musical hero of that time: Elvis Presley. An inspiring icon from day one. His music fascinated an entire generation. His swinging hips made women swoon in their droves. His performances triggered hysteria among his fans. And later, from the early 1960s, groups such as The Beatles and The Rolling Stones ensured that everyone was gripped by rock 'n' roll fever. What represented a total moral decline for some, meant newly discovered freedom for others.





This about-turn couldn't just be heard. It could also be seen in every little detail. In the park, on the street, at work, in the cinema: sweeping petticoats, skin-tight pencil skirts, corduroy suits, black leather jackets, blue jeans, meticulous Beatles' hairstyles and gelled Elvis quiffs. A fashion trend that not everyone liked. And that was pure dynamite.

### Brave, provocative, different.

But the 1950s weren't just rebellious and free-spirited. Nor just fun and exhilarating. The catwalks revealed a completely different picture: Christian Dior's iconic 'New Look' shaped this era, with its

elegance and femininity. Putting the sparkle back into the fashion world with a touch of luxury. Equally style-defining: the legendary Coco Chanel suit from 1954, setting standards that re-emphasized feminine elegance. And it's certainly no coincidence that this became the globally iconic fashion item for the 'modern' woman.

Speaking of modern women: something was also happening on the big screen. Marilyn Monroe became an icon of the time. Causing queues at box offices worldwide, even at the start of her career. Thanks to her liberal demeanour and her roles, which flirted with femininity and sensuality. Because: why not display your assets and rapidly overhaul old customs? It's certainly no coincidence that she's still considered to be the ultimate sex symbol. But she wasn't the only one thrilling some audiences on the big screen, while causing others to bashfully shake their heads. One rebel conquered the cinemas: James Dean. Controversial, wayward, polarizing. And unique, thanks to his cool, distinctive style. He became a role model for young people. And the ultimate cinema star of the 1950s.

## STYLE & FASHION







A clear, detailed language was spoken in domestic living rooms – a pastel-colored one. Slender shapes and smooth surfaces characterized this new style. The best example: probably the most iconic item of furniture of that time, the kidney-shaped table. Asymmetrically shaped, with three slanted, narrow legs, no home was complete without it. So it's hardly a surprise that even to this day the table is so synonymous with the 1950s. But other legendary furnishings, such as the wing chair, tulip lamp and hostess trolley, also became permanent fixtures in people's homes. As did corduroy. This fabric adorned armchairs and three-piece suites and was an integral part of this interior style.

In short: the 1950s rid themselves of the chains of the past and left its mark. With a solid, functional and puristic style. While bringing new courage and impetus to people's lives – with a newly discovered attitude to life and the desire for freedom and self-determination.

Self-determination. A term that has always played an important role for Porsche – after all, Ferry Porsche had no hesitation in building the sports car of his dreams. Creating something that no-one had achieved before. Bringing sports car emotion to series production. And accelerating the spirit of the times.

The good news: all of this is returning. In the form of the four Porsche Heritage Design models. These are bringing iconic design back to the road in a new look. Reviving the emotion of bygone days – and reviving the spirit of those times.

These icons of cool are taking us on a journey that leads us from the past directly to the future. And brings back what was previously considered cool. Because the most beautiful journey in a Porsche is often one through time.



# YOU DON'T CREATE SOMETHING TIMELESS BY CHASING TRENDS.



**1948.** Not just any old year for Porsche. But an initial spark. The first Porsche – developed under the leadership of Ferry Porsche – was registered: the Porsche 356.

**A car that was one thing above anything else: unique. And brought sports car emotion to series production for the first time.**

Followed by its international motorsport début just three years later. Which couldn't have been more successful. Porsche competed at Le Mans with the 356 SL, producing 45PS. At the wheel: two Frenchmen, Auguste Veuillet and Edmonde Mouche. The conditions: more than tough. Bad weather, poor visibility and a lot of rain. No issue for the Porsche 356 SL and its drivers. They covered the 1,766.34 miles with an average speed of 73.5 mph and a lap average of up to 87 mph. Crossing the finish line 24 hours later. As class winners.

**A success across the board. For Porsche in general. And in motorsport.**

So it's no surprise that Ferdinand Porsche praised his son Ferry for the design of the now legendary Porsche 356 with the words, "I would have built it exactly the same, right down to the last screw".

50

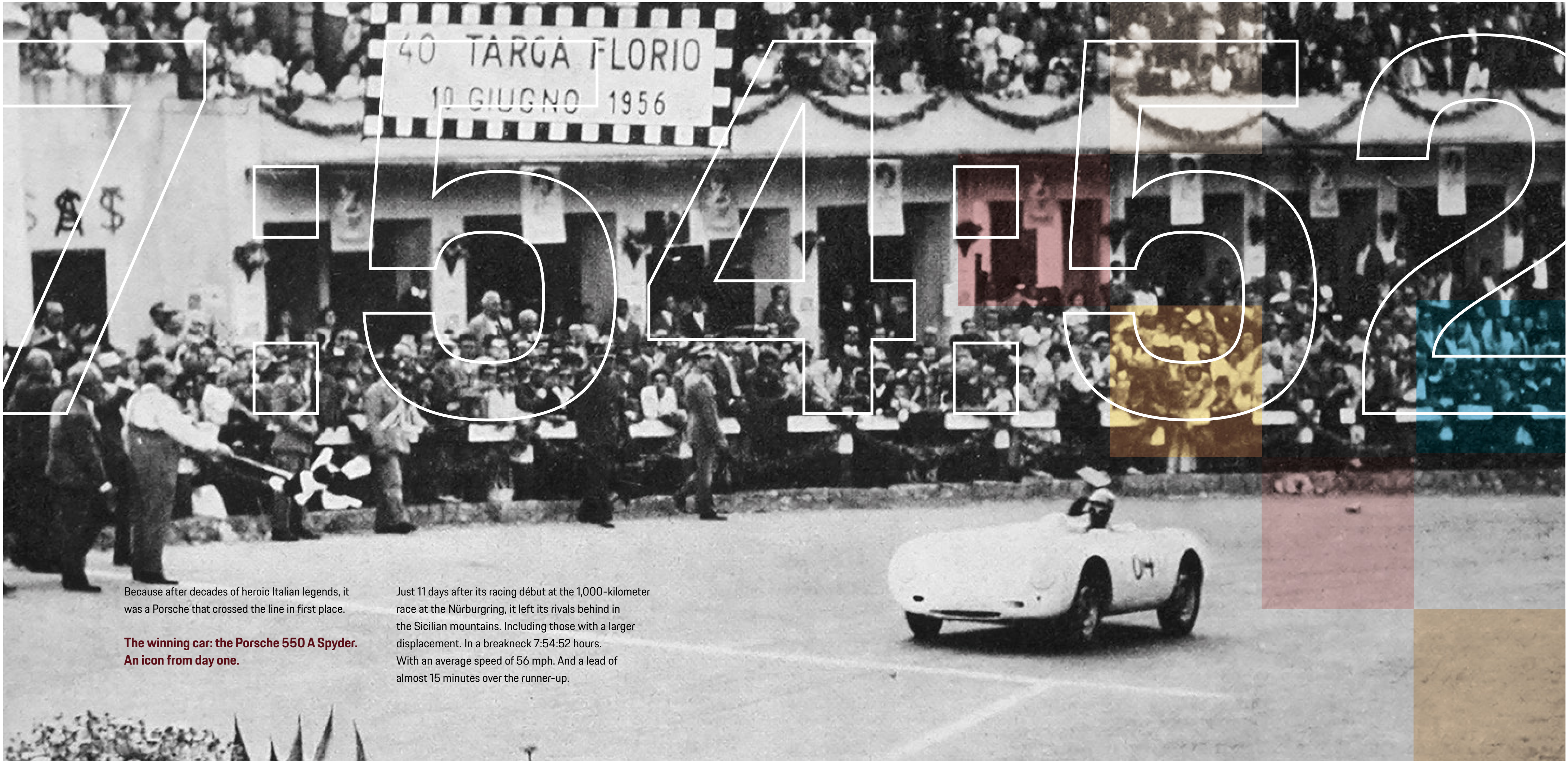


# 50

## THE MOTORSPORT HISTORY THAT WE WRITE *CAN ALSO BE ICONIC.*

Maximum temperatures. Peak performance. High time: 10 June 1956 saw Porsche first take to the grid at the Targa Florio – the toughest long-distance race of that time. Writing another chapter in motorsport history in Italy.





Because after decades of heroic Italian legends, it was a Porsche that crossed the line in first place.

**The winning car: the Porsche 550 A Spyder.  
An icon from day one.**

Just 11 days after its racing début at the 1,000-kilometer race at the Nürburgring, it left its rivals behind in the Sicilian mountains. Including those with a larger displacement. In a breakneck 7:54:52 hours. With an average speed of 56 mph. And a lead of almost 15 minutes over the runner-up.





The foundation for many more victories was laid at the Targa Florio on that hot summer day. But that's not all: in recognition, the winner was presented with a licence plate by Vincenzo Florio, the race founder. This prize – 'La Targa', Italian for licence plate – ultimately became the namesake of the dynamic cabriolet featuring a wide roll-over bar.

By the way, we decided not to use the full name of the mountain race. There were too many concerns that it could lead to the abbreviation, 'Porsche Flori'.



The face of success: victory poster by Hanns Lohrer depicting success at the Targa Florio in 1959.



50

**SOME ICONS  
WITHSTAND  
THE TEST  
OF TIME.**

***OTHERS  
OVERTAKE  
IT.***



**The 911 Targa 4S Heritage Design Edition. Not a copy. Not a replica. But a reinterpretation that pays particular tribute to the roots of the Porsche brand.**

An ultra-modern car with historic details. Do they go hand-in-hand? Can the attitude to life of bygone times experience a revival as we head to the future? And can we bring iconic Porsche classics back to the road? All questions to which we wanted to find answers. And ultimately did so.

The result? Porsche Heritage Design. Four cars, inspired by four epic eras, with a single vision: to reawaken the emotions of that time in brand-new vehicles. Reshaping the spirit of the times.

The starting flag comes down with the first model, the 911 Targa 4S Heritage Design Edition. This reinterprets the classic design features of the 1950s – and also takes a look at the 60s. Because good ideas are simply timeless. So it's no surprise that the 911 Targa 4S Heritage Design Edition invokes not only one, but two special style icons: the legendary Porsche 356 and the first generation of the 911.





A particular priority for Ivo van Hulten (Head of Interior Design Style Porsche), Volker Müller (Head of Color & Trim Design Style Porsche) and Stéphanie Kleiböhmer (Color & Trim Design Style Porsche), along with Thorsten Klein (Design Interior Style Porsche):

**Looking to the future.  
While not losing sight of the past.**

“Our aim was to make the lifestyle of bygone times tangible for our customers, and above all the attitude to life that’s associated with our historic cars,” reports Stéphanie Kleiböhmer.

Their sources of inspiration? Old original color charts, design elements from the 1950s and 60s, historic cars and of course the lifestyle of that time. What was trendy back then. What made people laugh, dance the swing and cheer.

**REDUCED TO THE MAXIMUM.**

“Pure. That was the working title we came up with for the limited edition. And which we still find extremely apt,” explains Ivo van Hulten. Scream and shout? Others do that. Porsche is honest, puristic. As shown by the tear drop shape of the iconic 356.

SMALL, LIGHTWEIGHT,  
AGILE, COMPETITIVE.  
WITH AN HONEST, UNIQUE  
DESIGN LANGUAGE.





## BACK TO THE FUTURE.

A complete work of art. Numerous details. There's much to discover and experience. And much that points to the origins of the 911 Targa 4S Heritage Design Edition.

One thing that the models have in common is the key themes that can be found in all four cars. And continue to be developed. From vehicle to vehicle. From decade to decade.

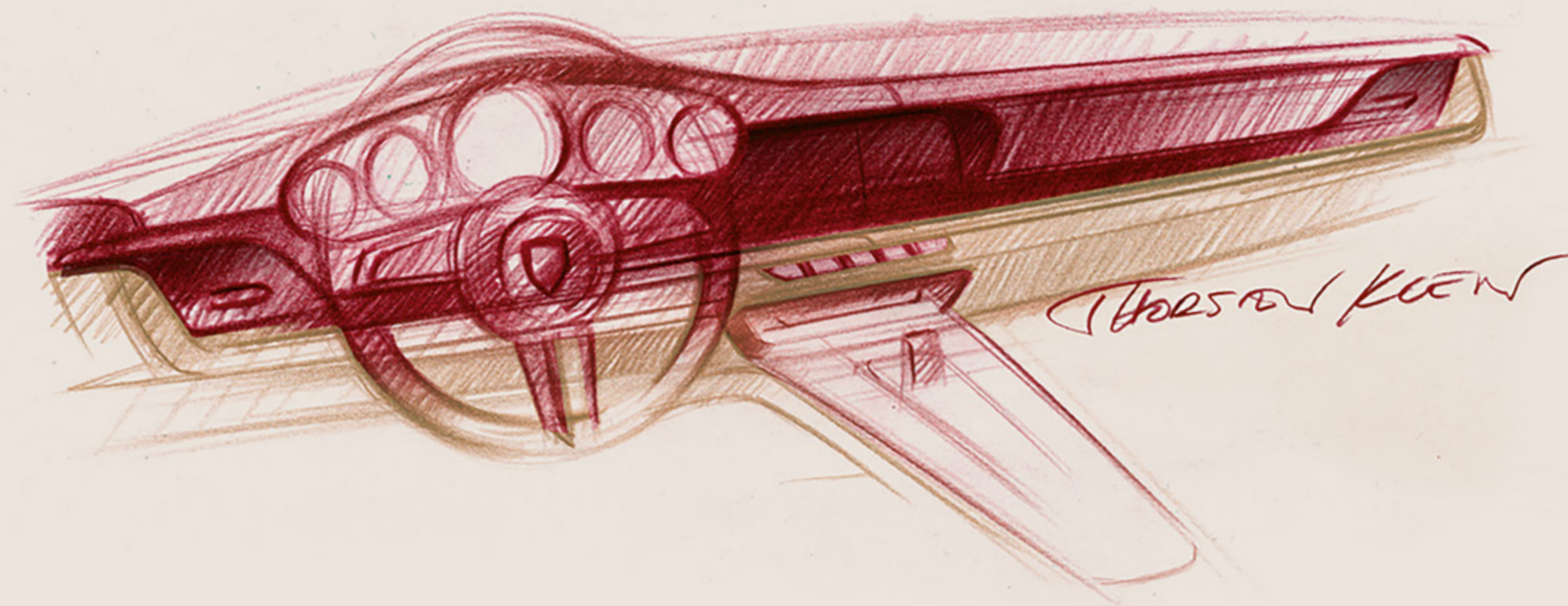
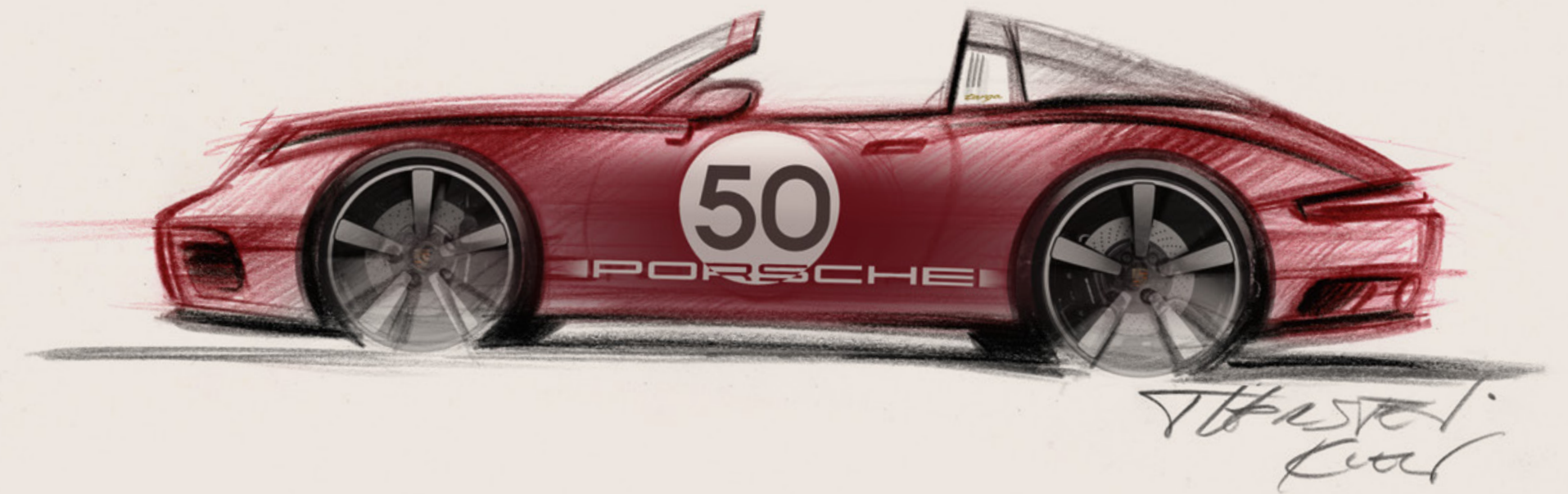
**Key theme: fabric.**

**A feature that has played an important role for Porsche from the outset.**

"Corduroy, Pepita, Pascha and Tartan. All textiles and patterns from our history that we are reviving in the interior," reports Volker Müller. "It was particularly

exciting to study and test the old fabrics and patterns – to reinterpret these according to current standards of safety and comfort, and return them to the road," explains Stéphanie Kleiböhmer. "Because fabric and surfaces are something very special that evoke memories. Maybe of childhood. Of bygone times. Of a Porsche from back then," adds Volker Müller.

Corduroy in Atacama Beige is used as a style-defining feature on the seats and door panels of the 911 Targa 4S Heritage Design Edition. "However, the extremely high wool content of the original cloth no longer meets today's standards," says Volker Müller. Other fibres have therefore been used. The result: a firmer look.



## THE SAME. YET DIFFERENT.

In the 1950s, red cars took to the road in greater numbers. Earthy, puristic and with a light brown tinge. This is how Porsche Red was described back then. A typical color combination was often Ivory and Strawberry Red. And the Porsche literature of the 1950s – user manuals and books – were also dark red and white. Just like the signage in workshops, authorized Porsche dealers and car showrooms, which were also bright red.

So it's no surprise that the 911 Targa 4S Heritage Design Edition reflects this typical color scheme. Just as with corduroy, this basic feature – the color red – has been modified and updated. "So we opted for Cherry Metallic," explains Ivo van Hulten. Intense

and high quality, it's in perfect harmony with the silver-colored Targa bar and gold-colored logo. Another detail that's very important to the designers which you may only notice at second glance.

In short: everything in the 911 Targa 4S Heritage Design Edition has a story. Everything has its purpose and equivalence. It's almost like meeting your first love again. And finding that they're just as attractive as they were on day one.



# 911 TARGA 4S

## HERITAGE DESIGN EDITION

Performance and freedom. The two things that the Targa has embodied from the outset. Originally developed as a safety cabriolet, the importance of its unique roof design went way beyond mere functionality. It turned the 911 Targa – just like the 911 Coupe – into an icon. And still lends it its distinctive appearance. Like a unique signature.

In the 911 Targa 4S Heritage Design Edition, this iconic concept has been further developed according to the rules of modern technology. The roll-over bar invokes the traditional shape.

And the fabric hood, with fully automatic opening and closing, meets all of today's safety and comfort requirements.

Featuring historically inspired details, the 911 Targa 4S Heritage Design Edition from Porsche Exclusive Manufaktur is limited to 992 units worldwide. A reference to the new 911 Targa that creates truly unforgettable experiences.

Please refer to the website [www.porsche.com/targa-hde](http://www.porsche.com/targa-hde) for all further vehicle-specific information.







GREAT EMOTIONS  
ARE ALWAYS IN VOGUE.

How about some nostalgic splashes of color?

No problem. Thanks to the Cherry Metallic exterior color, which is exclusively available for this model within the 911 series.

The two-tone leather interior in Bordeaux Red or black in conjunction with OLEA club leather in Atacama Beige creates a stylish image.











Driving in the slipstream of the past? Not enough. With a powerful output of 443 hp and top track speed of up to 188 mph, you can easily prepare to overtake.

Shifting up a gear in a Porsche has always been extremely emotional.  
The enhanced 8-speed Porsche Doppelkupplung (PDK)  
now makes this even sportier.



Regardless of whether you're revisiting history or looking into the future, the LED headlights with matrix beam in black including Porsche Dynamic Light System Plus (PDLS Plus) will show everything in the right light.









Leather. A timeless material. For a high-quality interior look and feel. Whether on the sun visors, steering column casing or in the form of the leather interior package, dashboard trim in leather and door panel trim in leather: the interior with extensive leather trim as standard will attract attention.



As distinctive as your favorite song: Porsche sound from the sport tailpipes.

Firm roadholding in the here and now. The 20/21-inch 911 Carrera Exclusive Design wheels painted in High Gloss Black provide the necessary traction.







## WORTH ITS WEIGHT IN GOLD: YOUR OWN UNIQUE SIGNATURE.

Gold-colored logos. A design feature steeped in tradition. While the first Porsche models still bore silver-colored logos, the gold-colored signature at the rear became increasingly common from the mid-1950s – lending vehicles an ‘exclusive touch’.

With the launch of the Porsche 912 and Porsche 911 T in the mid to late 1960s, the gold-colored logos were gradually replaced by silver-colored and black anodized logos.

A high-quality, historical design element that the 911 Targa 4S Heritage Design Edition revives – and brings to the modern age. Because gold-colored logos also adorn the edition’s rear and iconic Targa bar.

By the way, gold-colored logos are a distinguishing feature that will also embellish all future Heritage Design models.









# YOU SHOULD NEVER FORGET YOUR ORIGINS.

When designing a limited edition collector's piece and seeking highly detailed distinguishing features for 'connoisseurs', one particular element instantly comes to mind: the Porsche Crest. As an essential trademark, it doesn't just tell a story. It has always represented big dreams.

As a tribute to the brand's roots, the Style Porsche experts, vehicle developers and Porsche Exclusive Manufaktur team have worked closely together to bring the Crest of the original 911 from 1963 back to the 911 Targa 4S Heritage Design Edition.

And so the historic Crest now adorns the bonnet, sport steering wheel, vehicle key and 20/21-inch 911 Carrera Exclusive Design wheel centers. And can also be found – embossed – on the headrests and key pouch of this limited edition collector's piece.



The beginning of an era: original drawing by Franz Xaver Reimspieß from 1952.

It's easy to explain why the original 911 from 1963 was chosen when deciding on a historic Crest: the first Crest to adorn the legendary Porsche 356 no longer fits today's vehicle dimensions. Unlike the Crest that was created in 1963 for the Porsche 911. It's not only a specific distinguishing feature, but also a special reminder that rounds off the edition's design as an elegant detail. And further reinforces its uniqueness.

Speaking of uniqueness: just as he did when building the legendary 356, Ferry Porsche also took the lead when designing the Crest back in 1952. The idea of the Crest as a quality seal for the type 356 was devised during a meeting with the then US importer, Max Hoffman. That same year, the engineer, Franz Xaver Reimspieß, presented a design that has retained its basic character to this day.



1954–1965

1963–1973

1973–1994

1994–2008

From 2008

Not a revolution. But an evolution.  
With minimal changes, the Crest has  
represented sports car fascination  
for 65 years.



The Crest is still committed to its original location and Swabian homeland: the 'Stuttgart Rössle' and city name are depicted in the center of the golden shield. The stylized antlers are derived from the traditional Württemberg-Hohenzollern coat of arms. And the colors are a further reference to its origins. The black stripes represent Württemberg, while the red ones symbolize Baden.

The subtle changes: today's black 'PORSCHÉ' logo used to be gold-colored. The 'Stuttgart Rössle' had a slightly different look. And the deep red of today's stripes with a structured surface used to be more orange – as a nod to the regional colors of Württemberg-Hohenzollern.

One thing that has always remained the same: its detailed manufacturing. The genuine Porsche Crest is produced in a complex process using special tools based on original drawings. With accurate colors and materials. Plated with silver and gold. Thanks to this authentic manufacturing process, it conveys sports car fascination – made in Zuffenhausen – to the world.

In short: the Porsche 911 Targa 4S Heritage Design Edition revives a piece of the past that unites tradition and future to form a timeless entity.











The special 911 Targa 4S Heritage Design Edition decals have their roots in motorsport. A 356 SL with the number 46 took to the grid at the 24h of Le Mans in 1951. The rest is history. Racing history. That's now being revived: in the form of an optional, unique start number.

By the way, in previous years, start numbers were attached by mechanics before the race. A tradition to which the Porsche Exclusive Manufaktur remains true. Because the individual start number – that adorns the side of the 911 Targa 4S Heritage Design Edition – is also attached by hand shortly before completion.

THERE'S ALSO AN IDEAL LINE BETWEEN TRADITION  
AND FUTURE.







In keeping with the manually painted 'spears' of the 1950s, a high-quality foil stripe adorns the front wings of the 911 Targa 4S Heritage Design Edition. In the early days of motorsport, this was initially used to cover up any scuffs caused by collisions. However, this changed over the years – and the functional stripe was transformed into a design feature that almost resembles 'war paint'. And became a characteristic design feature. As well as a sign of the early trend towards personalization.









# WHAT DETERMINES AN ICON? ITS SIGNATURE.

You can't see a soul. Or measure it. But if it's there, you can feel it. Over every kilometer, in every hundredth of a second, in every little detail. Such as on the Porsche Heritage plaque on the rear lid grille, for example.

Issued in the 1950s as a label for excellent engine performance and an award for loyal Porsche enthusiasts, it was presented to every 356 driver upon reaching the 100,000km mark. A quality seal, therefore, that was first reissued several years ago and now adorns the rear lid grille of the 911 Targa 4S Heritage Design Edition.

As well as the Porsche Heritage plaque on the rear of the vehicle, a number of detailed signatures also invoke Porsche history in the interior – as an expression of the Edition's special nature.

For example, the '911' logo and limited edition plaque on the dashboard trim refer to the limited number of 992 units worldwide. And the door-sill guards in brushed aluminum, embellished with the '911 Targa 4S Heritage Design Edition' logo, is another exclusive detail.







A MILESTONE. IN THE RACE AGAINST TIME.



Modern meets historical. Analog meets digital. The 911 Targa 4S Heritage Design Edition instrument cluster gives the impression that you're in a race against time. Because the design invokes the origins of Porsche. And yet is as much in the here and now as it can be.

When driving, you always have a direct view of the instrument cluster featuring two high-resolution 7-inch displays and an analog tachometer, classically styled with a needle. With white needles and increment markings – for maximum contrast. And with green numbers – as a tribute to the legendary Porsche 356.

But that's not the only detail inspired by the Porsche 356. Along with the historic tachometer, the dials of the Porsche 911 Targa 4S Heritage Design Edition also feature elegant relief embossing.

Other design features from the 356 are the white hands and green numbers of the Sport Chrono stopwatch. A detail that emphasizes its exclusive nature, distinguishes it from the series production version and revives a piece of Porsche history with every lap. Because you can actually measure the spirit of the times.











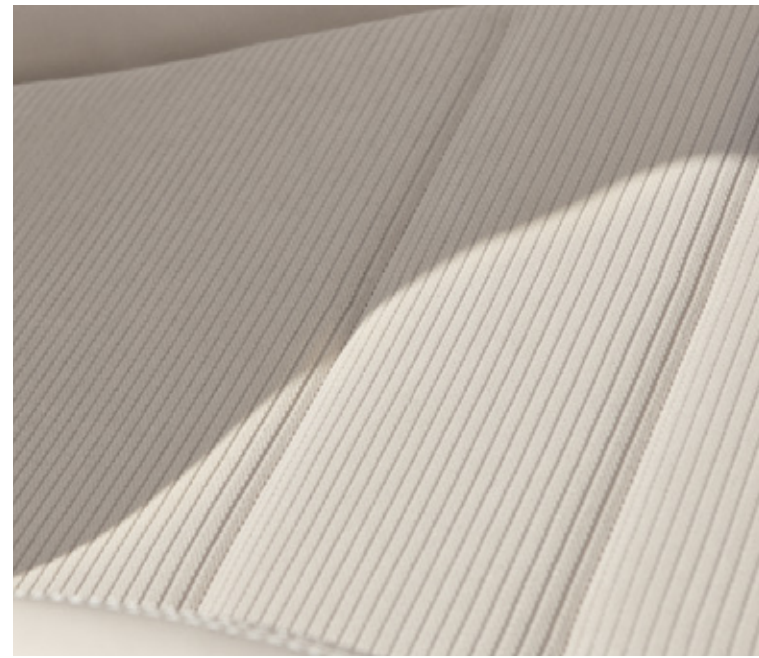
The spirit of the 1950s is also on display in the interior with the perforated Race-Tex in Atacama Beige that lines the roof. A reference to the origins of Porsche. Because with the launch of the Porsche 356 A at the end of 1955, the perforated roof lining was also used as a special design feature. Back then, it was made of thin synthetic leather and available in three colors: grey, beige and two-tone beige/grey.

Another piece of Porsche history and stylish detail waiting to be discovered is the perforation on the A and B pillars.



IMAGINATION  
KNOWS NO LIMITS.





Corduroy. It was already at home in the Porsche 356, decorating the seats of this legendary sports car. Soft, supple and elegant, it embraced the spirit of the times and the fashion of the decade. And was also a sign of quality, because it allowed for natural seat ventilation, was non-slip and therefore safer.

The first Porsche – the Porsche 356 'No. 1' Roadster – had to do without corduroy. But from 1952, it finally became part of the interior, embellishing the seat centers and available as an optional extra.

In the interior of the new 911 Targa 4S Heritage Design Edition, this fabric is now reviving past dreams: elegant corduroy is used on the door panels and covers the seat centers. A nod to the 1950s that harmoniously completes the two-tone leather interior

in Bordeaux Red and OLEA club leather in Atacama Beige exclusively available for this edition.

By the way, the innovative OLEA club leather is not only extremely soft. It's also a new leather quality at Porsche that uses olive leaves in the tanning process. Because – compared to conventional tanning methods – this tanning agent largely consists of renewable raw materials.

See. Feel. Touch. Sense. The soul of a sports car has seldom been more tangible than in this interior. So take a seat and embark on a journey that will take you from the past directly to the future.



THE FABRIC OF DREAMS.  
IN A DREAM CAR.







# A PIECE OF THE PAST. IN THE PRESENT.

The 911 Targa 4S Heritage Design Edition adds a number of style-defining design features to the new 911 Targa. And pays homage to the rich history of Porsche. But that's not all: standard equipment, vehicle information and additional refinement options are available in the 911 Targa catalog, Porsche Car Configurator or online at [www.porscheusa.com](http://www.porscheusa.com)



## Exterior.

- 1 Exclusive exterior color within the 911 series: Cherry Metallic
- 2 Gold-colored 'targa' logo
- 3 Gold-colored 'PORSCHE' logo and model designation
- 4 Porsche Heritage plaque on the rear lid grille
- 5 Historic Porsche Crest on wheel center caps
- 6 20/21-inch 911 Carrera Exclusive Design wheels painted in High Gloss Black or optionally in Satin Platinum
- 7 Historic Porsche Crest on the hood
- 8 Spears on the fenders
- 9 Exterior decals on the vehicle sides in historical design
- 10 Personalized start number (can be ordered separately)
- 11 Indoor car cover

## Interior.

- 12 Exclusive interior equipment: two-tone Bordeaux Red leather/Atacama Beige OLEA club leather (also available in two-tone black leather/Atacama Beige OLEA club leather)
- 13 Historically inspired instrument cluster
- 14 Historic Porsche Crest on headrests and steering wheel
- 15 Leather interior trim
- 16 'Porsche Exclusive Manufaktur' logo embossed on the center console lid
- 17 Limited edition plaque on the dashboard trim
- 18 Heritage Design floor mats





EXTERIOR COLORS.

CHERRY METALLIC



GT SILVER METALLIC



BLACK



GUARDS RED



CHALK



CUSTOM COLOR<sup>1)</sup>



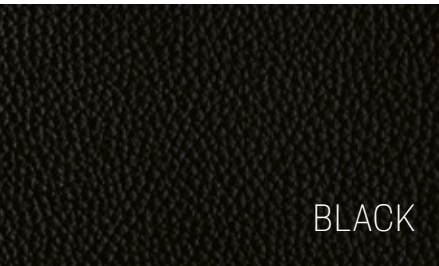
INTERIOR COLORS.



BORDEAUX RED



OLEA CLUB LEATHER  
ATACAMA BEIGE



BLACK



OLEA CLUB LEATHER  
ATACAMA BEIGE

Two-tone leather interior.

Another icon: leather. It's elegant, hard-wearing, easy to look after – and above all: timeless.

Expressive and harmonious: in the interior of the 911 Targa 4S Heritage Design Edition, you can choose between two different color combinations: two-tone Bordeaux Red leather/Atacama Beige OLEA club leather and two-tone black leather/Atacama Beige OLEA club leather.

In conjunction with corduroy in Atacama Beige, an overall image is created that emphasizes the edition's timeless modern character while representing a clear commitment to history.

By the way, the new color, Atacama Beige, sets specific accents. And is only available for the 911 Targa 4S Heritage Design Edition within the 911 model range.

1) For information about custom color; please consult your authorized Porsche dealer.





## OUR FIRST BESPOKE TASK FOR YOU: YOUR CUSTOMER CONSULTATION.

Can you make something special even more unique? Yes. By means of individuality and inspiration. From the outset: during your consultation. And by focusing on what is most important: you and your wishes.

Because the personalization of your sports car is an affair of the heart. For you – and for us. The consultants in our authorized Porsche dealers and the partners at our Exclusive Manufaktur therefore provide personalized, individual and professional answers to all your questions regarding the respective Porsche models and our range of personalization options.

There's probably no better place to express this shared passion than our factory in Zuffenhausen – at the heart of the brand – where you'll receive excellent advice from our Porsche Exclusive Manufaktur experts, with their extensive knowledge of all options and vehicle models.

One of the highlights of your visit is a tour of the Porsche Exclusive Manufaktur. Here you can gain first-hand experience of what attention to detail means for us. We'll also offer you a globally unique collection of material and color swatches, including numerous leather colors and paints. Exclusive access to our materials archive completes our offer. And of course, you'll also have the opportunity to view unique showpieces. This service isn't just limited to Zuffenhausen, but is also available at other international locations, such as Atlanta or Los Angeles.

In short: together with you, we ensure that a harmonious ensemble is created with the utmost care, concentration, passion and commitment, down to the very last detail. A true one-of-a-kind. Your Porsche.



NORMALLY, EVERYTHING REVOLVES AROUND HUNDREDTHS OF A SECOND. HERE, IT'S ALL ABOUT THE DIGIT BEFORE THE DECIMAL POINT.

911 Targa 4S Heritage Design Edition	
Engine	
Number of cylinders	6
Displacement	3.0 Liters
Power at rpm	443 hp 6,500
Max. torque at rpm	390 lb-ft. 2,300–5,000
Transmission	
Drive	All-wheel drive
Transmission	8-speed Porsche Doppelkupplung (PDK)
Chassis	
Front axle	MaoPherson spring-strut suspension
Rear axle	Multi-link rear axle
Steering	Electromechanical power assisted rack-and-pinion steering
Turning radius	36.8 ft
Brakes	Six-piston aluminum monobloc fixed brake calipers at front and four-piston aluminum monobloc fixed brake calipers at rear
Wheels	Front: 8.5 J × 20 ET 53 Rear: 11.5 J × 21 ET 67
Tires	Front: 245/35 ZR 20 Rear: 305/30 ZR 21
Dimensions/drag coefficient	
Length	177.9 in
Width (including exterior mirrors)	72.9 in (79.9 in)
Height	51.2 in
Wheelbase	96.5 in
Luggage compartment volume (front)	4.6 cubic ft
Fuel tank capacity	17.6 gal
Drag coefficient	0.30
Weights	
Curb weight	3,687 lbs
Gross Vehicle Weight Rating (GVWR)	4,596 lbs
Maximum load	909 lbs

911 Targa 4S Heritage Design Edition	
Performance	
Top track speed	188 mph
Acceleration 0–60 mph	3.6 secs
Acceleration 0–60 mph with Launch Control	3.4 secs
Fuel consumption <sup>1)</sup>	
City	TBD
Highway	TBD
Combined	TBD



<sup>1)</sup> U.S. EPA estimates. Your mileage and range may vary. As of the time of printing, the 2020 EPA numbers are yet to be determined. Please see your authorized Porsche dealer or visit [www.porscheusa.com](http://www.porscheusa.com) for the latest information.



# TIMEPIECES.



A GREAT SENSE OF TIMES PAST.  
EVERY SECOND.

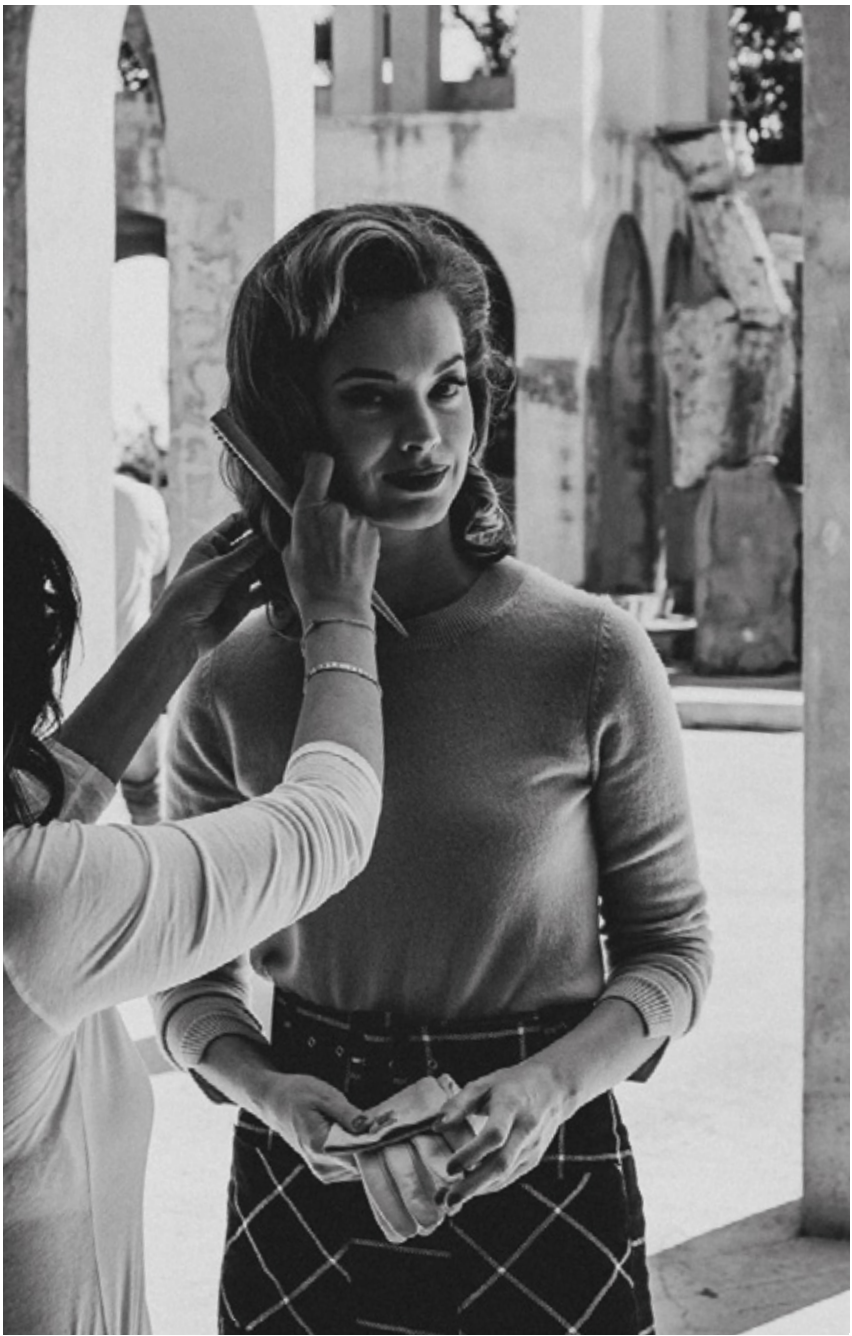
The spirit of the 1950s and early 60s as well as a piece of Porsche history for your wrist? Here it is: the Chronograph 911 Targa 4S Heritage Design Edition. An iconic masterpiece that's reserved exclusively for owners of the 911 Targa 4S Heritage Design Edition and thus the perfect extension of sports car fascination.

Attention to detail showcases the iconic design features, materials and unique Porsche heritage. Inspired by the instrument cluster of the Porsche 356, the dial is designed in the look of the former tachometer. Other reminders are the strap made of original Porsche vehicle leather, gold-plated PD Icon or rotor, which is based on the legendary Fuchs alloy wheel.

The historic Crest at its center also pays tribute to the origins of the Porsche brand. As does the limited edition number engraved on the back, which matches that of the vehicle. But despite all this nostalgia: the high-quality, in-house Porsche Design Chronograph caliber with COSC certification – the WERK 01.100 – can be found inside the innovative titanium case. It guarantees maximum precision.

In short: the Chronograph 911 Targa 4S Heritage Design Edition boasts an iconic design. Brings an aspect of our previous lifestyle to the present day. And is evidence of the intricate engineering skill from Porsche Design. Once again.





A little extra time:  
five days in Barcelona and Zaragoza.  
Four models and three cars in the spotlight.









Trends come. Trends go. Icons remain. And for very good reason. Because they embody a certain spirit of the times. Polarize. Fascinate. Inspire. And leave their mark in people's minds. As well as in their hearts.

The 1950s spawned many things that are still considered cool. And yet they're simply the starting flag: for further reminders of past decades. Full of fascination and a pure attitude to life.





Dr. Ing. h.c. F. Porsche AG is the owner of numerous trademarks, both registered and unregistered, including without limitation the Porsche Crest®, Porsche®, Boxster®, Carrera®, Cayenne®, Cayman®, Macan®, Panamera®, Spyder®, Tiptronic®, VarioCam®, PCM®, PDK®, 911®, 718®, RS®, 4S®, 918 Spyder®, FOUR UNCOMPROMISED®, and the model numbers and distinctive shapes of the Porsche automobiles such as, the federally registered 911 and Boxster automobiles. The third party trademarks contained herein are the properties of their respective owners. All text, images, and other

content in this publication are protected by copyright. No part of this publication may be reproduced in any form or by any means without prior written permission of Porsche Cars North America, Inc. Porsche Cars North America, Inc. believes the specifications to be correct at the time of printing. However, specifications, standard equipment and options are subject to change without notice. Some options may be unavailable when a car is built. Some vehicles may be shown with non-U.S. equipment. Please ask your authorized Porsche dealer for advice concerning the current

availability of options and verify the optional equipment that you ordered. Porsche recommends seat belt usage and observance of traffic laws at all times.

© 2020 Porsche Cars North America, Inc.  
One Porsche Drive  
Atlanta, GA 30354  
[www.porscheusa.com](http://www.porscheusa.com)

Effective from: 05/2020  
Printed in Germany  
WSLC2101000123 EN/US



# To be continued ...

