



PORSCHE



Tequipment Panamera

Accessories for the Panamera model range

Tequipment

It's the way we've always done it: differently.

The Panamera. Four doors, 4 seats, and plenty of flexible space. A sports car for four. It's a typical Porsche: lightweight, economical, agile, safe and comfortable. In no way cumbersome, but exceedingly dynamic. We call this 'Intelligent Performance'.

Just like the Porsche Tequipment range of accessories, for a special touch of individuality.

Each component not only has to be visually appealing, it also has to be technically compatible. That is why all the model-specific products in the Tequipment range have been developed, tested

and formulated with the complete vehicle in mind, and by the same Porsche engineers and designers who made your car.

Every product undergoes exhaustive testing throughout its development to ensure outstanding performance and lasting durability.

This is because they have to meet the highest standards of Porsche quality and functionality.

One of the highlights is the SportDesign package. As part of its development, this was subjected to continuous loads on specially designed test rigs. Aerodynamics and downforces,

for example, were evaluated extensively in the wind tunnel and adapted to the overall aerodynamic concept of the Panamera. Laboratory analyses provided confirmation of material and surface quality, and behaviour under dynamic driving conditions was subsequently observed on the racetrack.

Whichever Tequipment products you ask your Porsche Centre to fit, one thing remains unchanged: your original vehicle warranty.

For more information, see www.porsche.com.

Panamera models (figures in brackets refer to vehicles with 19-inch all-season tyres with low rolling resistance): fuel consumption (in l/100 km) · urban 18.8 (18.5)–7.6 (7.4) · extra urban 8.9 (8.7)–5.6 (5.5) · combined 12.5 (12.3)–6.5 (6.3); CO₂ emissions 293 (288)–167 (159) g/km; efficiency classes (Germany) (codes without brackets refer to vehicles without 19-inch all-season tyres with low rolling resistance and with manual/PDK, PDK or Tiptronic S as stated; codes in brackets refer to stated transmission variant in conjunction with 19-inch all-season tyres with low rolling resistance): Panamera G(G)/F(E), Panamera 4 (PDK) F(E), Panamera Diesel (Tiptronic S) C(B), Panamera S G(G)/G(G), Panamera S Hybrid (Tiptronic S) B(A), Panamera GTS (PDK) G(F), Panamera 4S/Panamera Turbo, Panamera Turbo S (all PDK) G(G); efficiency classes (Switzerland) for Panamera/Panamera 4/Panamera S/Panamera 4S/Panamera GTS/Panamera Turbo/Panamera Turbo S G; Panamera Diesel/Panamera S Hybrid C. Efficiency class valid in countries listed only.



SportDesign package design drawing



SportDesign package undergoing tests in the wind tunnel



Panamera 4S with SportDesign package on the Porsche test track in Weissach



Contents

Exterior

From the SportDesign package to optional alloy wheels. Whatever you choose, your decision will be a reflection of your sporty style.

6

Performance

Want to push the performance concept to the very limit? Welcome to the high-performance club.

24

Interior

Options for personalising the interior. Classic, pure or sporty.

28

Transport and car care

Intelligent transport solutions and everything you need to give your Panamera the care it deserves.

50

Panorama

This page provides a brief insight into the world of Porsche.

64

Index

66



Exterior

**Did you ever dream of being able to design a sportscar?
Now you can.**

With the Panamera – as with any Porsche – form follows function, and this form is sure to turn heads. A low wide stance, a sleek roofline. The overall impression leaves you in no doubt that these are true sportscar proportions.

Porsche's newest model line has only been in production since April 2009 and you've found a way to improve it already? Then this is your chance to take on the role of a Porsche designer.

If you would like to make your Panamera more dynamic, then perhaps the SportDesign package from Porsche Tequipment would be a good starting point.



SportDesign package



SportDesign package

SportDesign package

Sportswear should be functional and tailor-made. The SportDesign package was developed specifically for the Panamera. It comprises an imposing front apron in the exterior colour of the vehicle with air intake grilles (left, centre, right), distinctive sideskirts and the standard rear apron equipped with a finned diffuser.

SportDesign package without sideskirts

This package has been produced for vehicles already factory-equipped with the sideskirts from the Porsche SportDesign package.

Sideskirts

Specially designed sideskirts for both sides of the vehicle.

Bi-Xenon main headlights in black including Porsche Dynamic Light System (PDLS)

Love at first sight: customise the imposing Bi-Xenon main headlights including Porsche Dynamic Light System (PDLS) with a black finish on the inner trim, tubes and painted border.

Only available for vehicles with Bi-Xenon main headlights including PDLS.



Sideskirts



Bi-Xenon main headlights in black including PDLS



20-inch Panamera Sport wheels with summer tyres

Wheels

The wheels of the Panamera all have one thing in common: classic sportscar design. Elegant, light-weight and exciting, with sizes ranging from 18 to 20 inches. Their light-alloy construction reduces unsprung masses and allows a direct glimpse of the Porsche

brake system. Another example of sporty styling, it's a design that promises to make the difference: more driving pleasure.

20-inch Panamera Sport wheels with summer tyres

The 20-inch Panamera Sport wheels with summer tyres place the emphasis on performance, adding to the car's appeal in terms of looks and dynamics. Painted in GT Silver Metallic, these alloy

wheels with a multi-spoke design are generously dimensioned (9.5 inches wide at the front, 11.5 inches wide at the rear) to create a larger contact patch for a more dynamic appearance and to maximise traction.

Version with all-season tyres with low rolling resistance provisionally available from 08/2012.



20-inch Panamera Sport wheels painted in black (high-gloss) with summer tyres



20-inch 911 Turbo II wheels with summer tyres

20-inch Panamera Sport wheels painted in black (high-gloss) with summer tyres

These multi-spoke alloy wheels have centre spokes with a black painted finish. For a special touch, they are ringed in GT Silver Metallic and feature wheel centres in black

(high-gloss) with a full-colour Porsche Crest. Same dimensions as the 20-inch Panamera Sport wheel.

20-inch 911 Turbo II wheels with summer tyres

This wheel and tyre set is both powerful and dynamic. The elegant design of the forged alloy wheels with a two-tone finish is the epitome of individuality on the road.



20-inch RS Spyder Design wheels with summer or winter tyres



19-inch Panamera Turbo wheels with summer or winter tyres

20-inch RS Spyder Design wheels with summer or winter tyres

This design takes its cues from the wheels that adorned the successful Porsche RS Spyder race car. The prominent features of these sporty, lightweight forged aluminium wheels are the seven Y-shaped dual-arm spokes and the polished wheel rims. Wheels come with a choice of summer or winter tyres.

19-inch Panamera Turbo wheels with summer or winter tyres

Uncompromisingly sporty and designed for supreme performance. Harmonious down to the very last detail. These alloy wheels with five dual-arm spokes allow a direct glimpse of the Porsche brakes. Wheels come with a choice of summer or winter tyres.

Also available with all-season tyres with low rolling resistance.



19-inch Panamera Design wheels with summer tyres



18-inch Panamera S wheels with winter tyres

19-inch Panamera Design wheels with summer tyres

These alloy wheels may be perfect for everyday use, but they are anything but ordinary. Their styling is as unique as that of the Panamera itself. Five intricate V-shaped spokes give these wheels a supremely elegant look.

18-inch Panamera S wheels with winter tyres

These sporty classic alloy wheels with a 10-spoke design are characterised by their strong grip and unique styling, and make an important contribution to safety in the cold weather.

18-inch Panamera wheels with winter tyres







With the appropriate equipment, driving a Porsche can be enjoyed all year round, including the winter months. These alloy wheels for the Panamera feature a five-spoke design and a set of winter tyres.

For further product information and part numbers, please refer to the Panamera Tequipment price list.

See pages 18 to 21 for wheel and tyre specifications.



18-inch Panamera wheels with winter tyres

	Panamera Panamera 4 Panamera Diesel Panamera S Panamera 4S Panamera S Hybrid	Panamera GTS Panamera Turbo Panamera Turbo S	Wheel/tyre set	Wheel sizes (offset (ET) in mm)	Tyre specifications
	■ ⁴	■ ⁴	20-inch Panamera Sport wheels with summer tyres	Front: 9.5 J x 20 ET 65 Rear: 11.5 J x 20 ET 63	Front: 255/40 ZR 20 (101Y) XL Rear: 295/35 ZR 20 (105Y) XL
	■ ⁴	■ ⁴	20-inch Panamera Sport wheels with all-season tyres with low rolling resistance	Front: 9.5 J x 20 ET 65 Rear: 11.5 J x 20 ET 63	Front: 255/40 ZR 20 101V M&S Rear: 295/35 ZR 20 (105 Y) M&S
	■ ⁴	■ ⁴	20-inch Panamera Sport wheels painted in black (high-gloss) with summer tyres	Front: 9.5 J x 20 ET 65 Rear: 11.5 J x 20 ET 63	Front: 255/40 ZR 20 (101Y) XL Rear: 295/35 ZR 20 (105Y) XL
	■	■	20-inch 911 Turbo II wheels with summer tyres	Front: 9.5 J x 20 ET 65 Rear: 11 J x 20 ET 68	Front: 255/40 ZR 20 (101Y) XL Rear: 295/35 ZR 20 (105Y) XL
	■	■	20-inch RS Spyder Design wheels with summer tyres	Front: 9.5 J x 20 ET 65 Rear: 11 J x 20 ET 68	Front: 255/40 ZR 20 (101Y) XL Rear: 295/35 ZR 20 (105Y) XL
	■	■ ³	19-inch Panamera Design wheels with summer tyres	Front: 9 J x 19 ET 60 Rear: 10 J x 19 ET 61	Front: 255/45 ZR 19 (100Y) Rear: 285/40 ZR 19 (103Y)

- Compatible
- Not compatible
- ¹ Up to max. 240 km/h.
- ² Compatible with snow chains.
- ³ Not compatible with Porsche Ceramic Composite Brake (PCCB).
- ⁴ Not compatible with 5 mm spacers.

If your vehicle documents do not contain details of the correct wheel and tyre combination, please request a technical approval certificate from your Porsche Centre.

Note: The wheel centres shown are not included, except in the case of the 20-inch Panamera Sport wheels painted in black (high-gloss). All tyres fitted are designed exclusively for Porsche, as indicated by the special Porsche designation (NO, N1 etc.) on the sidewall. Tyres that do not carry this designation are not recommended for use on your Porsche.


Note on the use of winter tyres

Summer tyres provide optimum performance at ambient temperatures above approximately +7 °C. Below this point, the tyre compound begins to harden and braking distances are increased. We therefore recommend that you fit winter tyres during the colder months of the year so that you can drive your Panamera safe in the knowledge that it will continue to meet our high standards for driving safety even at low temperatures. All winter tyres approved by Porsche are identified by an 'N' designation on the sidewall.

- Compatible
- Not compatible
- ¹ Up to max. 240 km/h.
- ² Compatible with snow chains.
- ³ Not compatible with Porsche Ceramic Composite Brake (PCCB).

If your vehicle documents do not contain details of the correct wheel and tyre combination, please request a technical approval certificate from your Porsche Centre.

Note: The wheel centres shown are not included, except in the case of the 20-inch Panamera Sport wheels painted in black (high-gloss). All tyres fitted are designed exclusively for Porsche, as indicated by the special Porsche designation (NO, N1 etc.) on the sidewall. Tyres that do not carry this designation are not recommended for use on your Porsche.

	Panamera Panamera 4 Panamera Diesel Panamera S Panamera 4S Panamera S Hybrid	Panamera GTS Panamera Turbo Panamera Turbo S	Wheel/tyre set	Wheel sizes (offset (ET) in mm)	Tyre specifications
	■	■ ³	19-inch Panamera Turbo wheels with summer tyres	Front: 9 J x 19 ET 60 Rear: 10 J x 19 ET 61	Front: 255/45 ZR 19 (100Y) Rear: 285/40 ZR 19 (103Y)
	■ ^{1,2}	■ ^{1,2,3}	19-inch Panamera Turbo wheels with all-season tyres with low rolling resistance	Front: 9 J x 19 ET 60 Rear: 10 J x 19 ET 61	Front: 255/45 R 19 100V M+S Rear: 285/40 R 19 103V M+S
	■ ^{1,2}	■ ^{1,2}	20-inch RS Spyder Design wheels with winter tyres	Front: 9.5 J x 20 ET 65 Rear: 10.5 J x 20 ET 65	Front: 255/40 R 20 101V XL M+S Rear: 285/35 R 20 104V XL M+S
	■ ^{1,2}	■ ^{1,2,3}	19-inch Panamera Turbo wheels with winter tyres	Front: 9 J x 19 ET 60 Rear: 10 J x 19 ET 61	Front: 255/45 R 19 100V M+S Rear: 285/40 R 19 103V M+S
	■ ^{1,2,3}	–	18-inch Panamera S wheels with winter tyres	Front: 8 J x 18 ET 59 Rear: 9 J x 18 ET 53	Front: 245/50 R 18 100V M+S Rear: 275/45 R 18 103V M+S
	■ ^{1,2,3}	–	18-inch Panamera wheels with winter tyres	Front: 8 J x 18 ET 59 Rear: 9 J x 18 ET 53	Front: 245/50 R 18 100V M+S Rear: 275/45 R 18 103V M+S



Snow chains

Snow chains

Specially designed for Porsche models and featuring ultra-fine links for minimal adhesion of ice and snow.

Not compatible with wheel spacers.

Wheel centres

Set of wheel centre caps with full-colour Porsche Crest. The perfect finishing touch for any Panamera wheel.

For further product information and part numbers, please refer to the Tequipment Panamera price list.

Crested valve caps

Silver-coloured valve caps with embossed Porsche Crest.

Wheel spacers

Set of two 5 mm wheel spacers and 20 wheel bolts, 4 of which are anti-theft wheel bolts. The spacers are for the rear axle and create a wider track for enhanced stability and presence on the road. When

fitted, your Panamera will look even sportier, as the wheels run virtually flush with the body of the car.

Not compatible with the 20-inch Panamera Sport wheels or snow chains.

Anti-theft wheel protection

Set of 4 wheel bolts with anti-theft protection. Two versions available: for vehicles with or without wheel spacers.

Wheel bolts in black including anti-theft protection

Set of 20 wheel bolts, 4 of which are anti-theft wheel bolts. 2 versions available: for vehicles with or without wheel spacers.

For further product information and part numbers, please refer to the Tequipment Panamera price list.



Wheel centre



Crested valve caps for vehicles without TPM



Crested valve caps for vehicles with TPM



Wheel spacers



Wheel bolts in black including anti-theft protection



Performance

Performance is something you have to work on.

The Panamera is a Porsche, so it was never going to be ordinary. It's a development that draws on experience gained from six decades of Porsche motorsport and over 30,000 racing victories.

The result is clear to see, and can be felt the moment you depress the accelerator. Everything about the Panamera is uncompromisingly sporty, but there is room for even more. For example, you could

select the Porsche Ceramic Composite Brake (PCCB) or the Sports exhaust system. Or why not combine the two?



Porsche Ceramic Composite Brake (PCCB)

Porsche Ceramic Composite Brake (PCCB)

PCCB is a high-tech brake system. Its carbon-fibre-reinforced, internally vented and cross-drilled ceramic brake discs have a diameter of 410 mm at the front and 350 mm at the rear. Six-piston aluminium monobloc brake calipers at the front and four-piston units at the rear – all with a yellow finish – provide extremely high and consistent levels of friction.

The brake discs are made from a specially treated carbon-fibre material that is not only much harder than grey cast iron, it is also more resistant to heat. PCCB brake discs are also 50% lighter than standard discs of similar design, which increases agility and reduces fuel consumption.

Available for Panamera GTS, Panamera Turbo and Panamera Turbo S in conjunction with 20-inch wheels.

Sports exhaust system

The sports exhaust system comprises an optimised main silencer with tailpipes in a unique design. The sporty sound is selected using a separate button in the centre console.

Not available for Panamera Diesel or Panamera S Hybrid.

Sports tailpipes

Give the rear of your Panamera an even sportier appearance with



Sports exhaust system

these twin dual-tube tailpipes in a unique design in highly-polished chrome-plated stainless steel.

Not compatible with sports exhaust system.

Not available for Panamera Diesel, Panamera S Hybrid, Panamera GTS or Panamera Turbo S.



Sports tailpipes



Interior

**Sportiness and comfort are mutually exclusive.
Or so you thought.**

The Panamera offers an excellent combination of sportiness, comfort, flexibility and personal freedom.

Freedom, for example, to customise the interior. After all, the Porsche of your dreams has never been so

within your reach. How about creating a little more individuality by selecting the Yachting Mahogany or natural olive wood interior? Or even one of our other high-quality materials such as carbon or brushed aluminium? Each material

is available as part of our Equipment interior packages. Give your Panamera its own unique character. Even more sporty, even more exclusive? The choice is yours. The following pages will give you all the inspiration you need.



Brushed aluminium interior package

Walnut¹

A classic, high-quality dark wood with a unique and appealing grain.

Tineo¹

This light, reddish-brown hardwood from the South American Andes creates a very elegant look thanks to its striking horizontal grain.

Anthracite birch¹

This anthracite-coloured birchwood has an attractive wavy grain, an

impressive dual-tone effect and a silky sheen.

Natural olive¹

A high-quality ash wood with an olive grain and a silky matt sheen, giving a combination of elegance and individuality as well as a natural feel.

Yachting Mahogany¹

Inspired by the construction of exclusive yachts, mahogany is a fine dark wood. Light maple inserts provide a stylish contrast.

Carbon

Carbon is a light but highly durable material which has its origins in motorsport. Its sporty look is the ideal complement to the car's race-bred engineering.

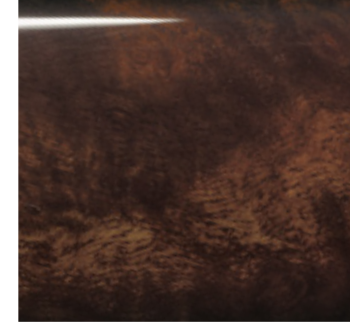
Brushed aluminium

Brushed aluminium sets clear accents and gives the interior a sporty minimalist appearance.

Alcantara

This high-quality material is easy to care for, washable and has excellent non-slip properties.

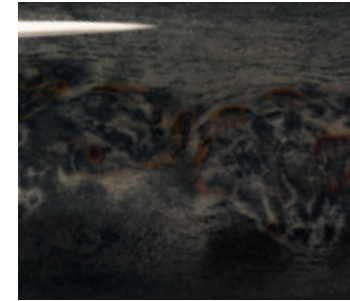
¹ Since wood is a natural product, there may be variations in colour and grain.



Walnut



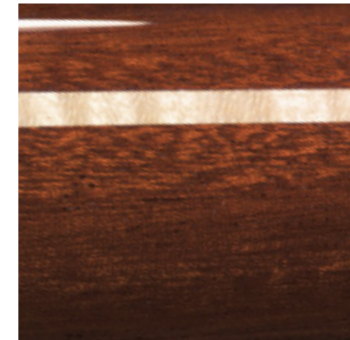
Tineo



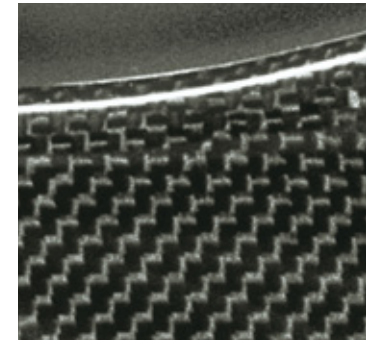
Anthracite birch



Natural olive



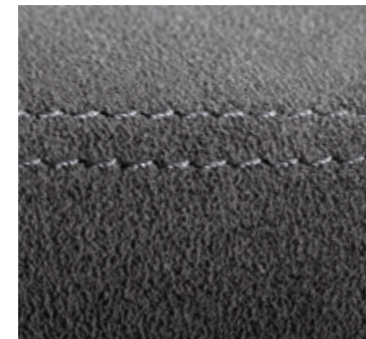
Yachting Mahogany



Carbon



Brushed aluminium



Alcantara



Interior package in carbon, extended trim package in carbon



Interior package in Yachting Mahogany, extended trim package in Yachting Mahogany

Interior packages

Would you like to make your Panamera even more individual, even more refined, or even sportier? Our range of interior packages enables you to choose the finish you would like for the decorative trims on the dashboard and doors, the decorative plate on the centre console lower section, the front ashtray cover, the cupholder cover in the rear and the storage

compartment lid on the rear centre console. Packages are available in walnut, tinea, anthracite birch, natural olive, Yachting Mahogany, carbon or brushed aluminium.

Extended trim package

The extended trim package creates an outstanding effect when combined with one of our interior packages, but is equally attractive on its own. The extended trim package

comprises the PDK¹ gear selector in aluminium and the multifunction steering wheel rim (not including airbag module) available in walnut, tinea, anthracite birch, Yachting Mahogany or carbon.

Only available for vehicles with PDK and multifunction steering wheel.

¹ 7-speed Porsche Doppelkupplung (PDK).

Extended trim package in Alcantara

This package comprises a PDK gear selector and multifunction steering wheel with steering wheel rim in black Alcantara.

Only available for vehicles with PDK and non-heated multifunction steering wheel.



Extended trim package in Alcantara



PDK gear selector in aluminium

PDK gear selector in aluminium

Specially designed PDK gear selector in aluminium. The PDK gear selector inlays feature leather trim in the interior colour.

PDK gear selector in Alcantara

This gear selector highlights the close association between Porsche and motorsport. Finished in black Alcantara.

Pedals in aluminium

Pedals in robust solid aluminium give the footwell an elegant appearance and enhance the sporty look of the overall vehicle.

Provisionally available from 12/2012.

LED extended interior lighting package

LED lighting package comprising the sun visor lighting (mirror side), front footwell illumination, glove compartment lighting, luggage compartment interior lighting, luggage compartment lid position lights and front and rear door position lights. Indirect LED lighting on the centre console basic element.

Note: recommended in conjunction with interior lighting package for rear compartment (order no. 630). In conjunction with interior lighting package for rear compartment (order no. 630), the LED package additionally includes the rear footwell illumination.



PDK gear selector in Alcantara



Pedals in aluminium



LED extended interior lighting package



SportDesign steering wheel

SportDesign steering wheel

This smaller diameter leather steering wheel, available in selected leather colours and with gear-shift paddles located behind the right- and left-hand spokes, will appeal to anyone who wants to make motorsport-style gear changes. The right-hand paddle

shifts up, the left-hand paddle shifts down, confirming that optimum comfort and sportiness needn't be mutually exclusive.

Key pouch in leather

In smooth-finish leather with decorative stitching and embossed Porsche Crest. Includes the tether for the vehicle key.



Key pouch in leather

Vehicle key painted

One vehicle key featuring side mouldings with a painted finish. Available in selected colours.



Vehicle key painted



Cooling compartment in the rear

Cooling compartment in the rear

The cooling compartment integrated between the individual seats in the rear has a capacity of 10.5 litres and features a separate on/off switch. It chills to a temperature of approximately 6 °C. Two drinking glasses with Porsche Crest and logo are included. The cooling compartment is accessible through the opening in the large rear centre

console located between the seats.

Not compatible with Panamera S Hybrid.

Only available for vehicles with large centre console in the rear.

Not compatible with the personalised reversible loadspace mat, the luggage net or the cargo liner.

The cooling compartment is permanently fitted in the luggage compartment and cannot be removed.

Cooling compartment reduces luggage compartment capacity.

Two fold-out cupholders above glove compartment

Two fold-out cupholders with adjustable diameter. Integrated



Two fold-out cupholders above glove compartment

above the glove compartment behind the dashboard trim.

Sun/privacy screen

Protects against direct sunlight through the rear screen and at the same time provides additional privacy. Attaches to the rear screen by a system of clips.



Sun/privacy screen



Reversible loadspace mat with nubuck edging

Reversible loadspace mat with nubuck edging

This reversible mat with loading edge protection shields the luggage compartment from dirt and protects the vehicle paintwork from scratches during loading. One side is trimmed in velour in the interior colour, the other side

features a hard-wearing, waterproof and non-slip rubber surface.

Not compatible with the cooling compartment in the rear.

Floor mats with nubuck edging

Precision down to the last detail: 4 made-to-measure floor mats in the interior colour with nubuck edging and 'PORSCHE' logo, which have a waterproof backing and are non-slip. Floor mat displacement is prevented by a special securing system at the front.



Floor mats with nubuck edging

Rubber floor mats

4 made-to-measure black floor mats featuring the Panamera silhouette and white 'PORSCHE' inlay. Non-slip and waterproof.



Rubber floor mats



Door sill guards in Yachting Mahogany

Door sill guards in Yachting Mahogany are non-illuminated and come without logo.

For further product information and part numbers, please refer to the Tequipment Panamera price list.



Door sill guards in carbon



Door sill guards in carbon, illuminated



Door sill guards in brushed aluminium, illuminated

Door sill guards

For a sporty and striking effect, illuminated or non-illuminated door sill guards provide a dramatic finishing touch. Those featuring a white illuminated model logo are a special highlight. Fitted front and rear, the door sill guards

are available in a selection of elegant materials: Yachting Mahogany, a dark wood with light maple inlays (high-gloss); carbon, a material reminiscent of the race track; or brushed aluminium, a durable material with a classy look.

Available with 'Panamera', 'Panamera 4', 'Panamera S', 'Panamera 4S', 'Panamera GTS', 'turbo' or 'turbo S' model logo.

For the Panamera GTS, the 'GTS' part of the logo is finished in red.



PCM with navigation module and CD/DVD autochanger



Universal audio interface

Audio and communication

PCM with navigation module and CD/DVD autochanger

The central information and communication system with a high-resolution 7-inch WVGA TFT colour touchscreen is easy to operate. The radio has an FM dual tuner frequency diversity with RDS, which continuously scans for the optimum frequency. The six-disc CD/DVD autochanger plays CDs

and audio DVDs and is MP3-compatible. Audio playback of video DVDs is also supported. The GPS navigation system has a hard drive containing map data for most European countries. Other features include dynamic route calculation, a 3D map display and automatic route recording.

Only available for vehicles with BOSE® Surround Sound System or Burmester® High-End Surround Sound System.

Navigation update for PCM (not shown)

Latest map update (Model Year 2012) for your navigation system.

Please consult your Porsche Centre for information on the data version of your PCM.

Universal audio interface

For vehicles with PCM, the front armrest storage compartment will contain two connections: an AUX interface for connecting an external audio source, and a USB port enabling you to connect a

USB memory stick containing MP3 tracks, an MP3 player, an iPod® or an iPhone®. The USB stick, iPod® or iPhone® can be operated conveniently via PCM, the multifunction steering wheel or the voice control system.

For vehicles with the CDR audio system, the centre console storage compartment will contain an

AUX interface for connecting a compatible audio source. The volume is adjusted using the controls on the CDR audio system, other functions are operated using the controls on the external audio source connected.



Electronic logbook

Electronic logbook¹

The optional electronic logbook enables automatic recording of mileage, route distance, time and date, starting point and destination as part of every journey. Once you have downloaded the logbooks from the PCM via Bluetooth® or the optional USB interface, you can evaluate the data on your home PC using the software supplied.

Telephone module¹

The quadband GSM telephone module offers convenience and excellent reception. By inserting a SIM card directly into the PCM's integral SIM card reader, calls can be made using either the hands-free facility or the optionally available cordless handset. Alternative mobile phone operation by Bluetooth® is also supported.

Mobile phone preparation¹

To enable a Bluetooth® connection for those mobile phones that support the Handsfree Profile (HFP)², an optional mobile phone preparation is available. With HFP, the PCM acts as a hands-free system. Using the PCM, it is possible to control the basic functions of the mobile phone. The GSM connection is established through the mobile phone's aerial.

Cordless handset for telephone module

Bluetooth® handset display and separate keypad for making telephone calls discreetly. Handset stored in the front centre console.

Only available for vehicles with PCM and telephone module.

¹ Only available for vehicles with PCM.

² For information on compatible mobile phones, please contact your Porsche Centre or visit www.porsche.com.



Telephone module



Mobile phone preparation



Cordless handset for telephone module



Porsche Vehicle Tracking System (PVTs)

Porsche Vehicle Tracking System (PVTs)

Enables remote location of a stolen vehicle within 27 European countries as well as Russia and South Africa. Location is initiated in the event of an alarm. A silent alarm is automatically triggered if the car is stolen or tampered with, or after notification from the vehicle owner. In addition to the extra security

offered by this system, it may also, depending on the country, reduce your insurance premium. The system has been tested using multiple simulated thefts in order to ensure that the service fully meets strict Porsche requirements. Your Porsche Centre will be happy to provide you with further information.

Only available for vehicles already equipped with preparation for the Porsche Vehicle Tracking System (PVTs).

A separate contract with the service provider recommended by your Porsche Centre is required, which is subject to additional charges.



Wireless internet access

Wireless internet access

A compact, high-end WLAN router installed neatly in the glove compartment and an additional aerial enable you to receive and broadcast the signal of your mobile network provider. This convenient internet access point gives you on-the-move online access from multiple WiFi-enabled client devices

(e.g. laptops, smartphones or netbooks), inside the vehicle, simultaneously if necessary, up to a maximum download speed of 7.2 Mb/s. Supports the HSPA/UMTS, GPRS and EDGE mobile data networks.

A data-enabled SIM card and a separate, valid subscription to a

mobile network provider (subject to charge) are required for internet access.

For further product information and part numbers, please refer to the Tequipment Panamera price list.



Transport and car care

The Panamera has space for four.

Luggage included.

Not only on the inside.

4 adults and their luggage in a sports car? Yes, it is possible – in the Panamera.

The interior of the Panamera offers occupants plenty of space and comfort. For children, we have a range of optional Porsche child seats.

Our roof transport systems ensure that even bulky items of luggage can be accommodated. A rear-mounted bike carrier is also available.

The cargo liner shields the luggage compartment from dirt. The luggage net holds items safely in

position. A car cover protects the exterior of your vehicle. We also offer a range of car care products so that your Panamera always makes an excellent, sporty impression.



Child seats

Travelling in a Porsche is not just for grown-ups. With Porsche Equipment child seats, it's for the little ones, too. Now passengers below the age of 12 need never miss out.

Porsche child seats

Porsche child seats meet strict safety standards. Specially designed, tested and approved for Porsche cars, they provide protection and comfort to passengers up to 12 years of age.

The fabrics are breathable, hypoallergenic and easy to clean with a removable and washable cover in black and grey with a contrasting red trim. The Porsche child seats can be fixed conveniently and safely. For increased safety, the

Child seats	Models	Group	Weight	Age	Panamera front ¹	Panamera rear
	Porsche Baby Seat ISOFIX, G 0+	0+	up to 13 kg	up to approx. 15 months	yes	yes
	Porsche Junior Seat ISOFIX, G 1	1	9 to 18 kg	approx. 9 months to 4 years	yes	yes
	Porsche Junior Plus Seat ² , G 2 + G 3	2 + 3	15 to 36 kg	approx. 4 to 12 years	yes	yes

¹ The use of a Porsche child seat on the front passenger seat is permitted only in conjunction with ISOFIX child seat mounting points on the front passenger seat (pre-delivery option order no. 899).

² Also available as Porsche Junior Plus Seat ISOFIT. ISOFIX/ISOFIT is a secure and user-friendly child seat mounting system that rigidly attaches the child seat to the vehicle.

Porsche Baby and Porsche Junior Seat ISOFIX have an independent five-point belt system.



Roof transport system



Roof box (wide)

Transport and car care

Roof transport system

Versatile base carrier offering a maximum roof load of up to 75 kg. Compatible with all Tequipment load-carrying attachments for a variety of purposes. Includes anti-theft security caps and locks.

Rear hatch opening may be partially reduced when carrying longer roof loads.

Roof box (wide)

Lockable plastic roof box in black (high-gloss) with a capacity of approximately 520 litres and integrated ski carrier. Can be opened from either side of vehicle. Dimensions: L 2,180 x W 895 x H 400 mm.

Roof box (narrow)

Lockable plastic roof box in Silver Grey with a capacity of approximately 310 litres and integrated ski carrier. Can be opened from either side of vehicle. Dimensions: L 2,260 x W 550 x H 380 mm.



Roof box (narrow)



Ski/snowboard carrier



Surfboard carrier

Ski/snowboard carrier

2 versions are available: 1 for up to 4 pairs of skis or up to 2 snowboards, and 1 for up to 6 pairs of skis or up to 4 snowboards.

Surfboard carrier

Carrier for the safe transport of board and mast.

Boat carrier

Mounting system for the safe transport of a boat.

Not suitable for rubber dinghies.



Boat carrier



Rear-mounted bike carrier

Rear-mounted bike carrier

Lockable, hinged aluminium rear-mounted carrier in black for up to two bicycles. Mounts easily on to the towbar system without any need for additional tools. Folds compactly for transporting in the luggage compartment.

Only for left-hand drive vehicles and only available in conjunction with towbar system.

Expansion kit for rear-mounted bike carrier (not shown)

Expansion kit for the transport of a third bicycle on the rear-mounted bike carrier.

Only available in conjunction with rear-mounted bike carrier.

Bike carrier

Lockable carrier for standard bikes up to a maximum frame-tube diameter of 85 mm. Up to three bike carriers can be mounted on the roof transport system.

Electrically extending towbar system

The towball can be electrically deployed or retracted at the push of a button. The maximum trailer

load is 2,200 kg (braked trailer) and 750 kg (unbraked trailer), the maximum noseweight is 100 kg.

Not compatible with Panamera S Hybrid.

Only available in conjunction with preparation for towbar system.



Rear-mounted bike carrier folded



Bike carrier



Electrically extending towbar system



Outdoor car cover

Outdoor car cover

Tailored outdoor cover in silver-coloured fabric with Porsche Crest and logo. Water-repellent, it provides excellent protection against a range of weather conditions including strong sunlight. Includes anti-theft protection.

Indoor car cover

Tailored indoor cover made from breathable and anti-static fabric.

With full-colour Porsche Crest and logo.

Luggage net

Floor net for holding items in the luggage compartment safely in position. The easy-to-use net is attached to the lashing eyelets on the luggage compartment floor by four integral hooks. The net's highly elastic material enables you to vary its tensioning force.

Not compatible with the cooling compartment in the rear.

Cool box

Easy-to-use cool box with 12-volt power connection and 12-litre capacity for food and drinks. Secured using patented Porsche attachment system. Includes battery discharge protection.

Cargo liner

Waterproof and washable, this made-to-measure liner in black plastic protects the luggage compartment from dirt. Ideal for transporting shopping or sports equipment to and from the car.

Not compatible with the cooling compartment in the rear.

Not compatible with Panamera S Hybrid.



Indoor car cover



Luggage net



Cool box



Cargo liner



Wheel cleaning kit

Wheel cleaning kit

Care products and brush set for alloy wheels. Cleaning fluid also available separately as a refill.

Porsche Charge-o-mat II

Battery charger with charge maintenance and monitoring function. An optional adapter is available for vehicles without cigarette lighter.

Microfibre cleaning cloths

Pack of three microfibre cloths enabling the PCM touchscreen and other delicate interior surfaces to be cleaned safely and efficiently.

Ice scraper

Practical accessory featuring aluminium telescopic handle enabling easy removal of ice and snow from your Porsche. Integral rubber lip for removing water.

Car-care case

Aluminium case containing high-quality car-care products approved for your Porsche. Includes insect remover, shampoo, paint polish, wax, glass cleaner, chamois leather, terry cloth, two sponges and leather conditioner. All products are available separately.

For further product information and part numbers, please refer to the Tequipment Panamera price list.



Porsche Charge-o-mat II



Microfibre cleaning cloths



Ice scraper



Car-care case



Porsche Centres

Your Porsche Centre can assist you with every aspect of purchasing and owning your Porsche. You will also find a wide range of products and services, including genuine Porsche parts and accessories.



Porsche Exclusive

Realise your vision of the perfect Porsche with our factory customisation programme. From styling enhancements to performance upgrades, all modifications are uniquely handcrafted for your Porsche.



Porsche Tequipment

You've already taken delivery of your Porsche. Are you now thinking of giving it a personal touch? For more information, please contact your Porsche Centre. Alternatively, visit www.porsche.com or call +49 (0)711 911-25977. E-mail: customercenter-exclusive@porsche.de.



Porsche Assistance

Enjoy peace of mind with our exclusive breakdown and accident recovery service. Membership is free when you buy a new Porsche.



Porsche Financial Services

Our innovative suite of financial services is specially tailored to the needs of Porsche owners. Products range from attractive finance and leasing options to vehicle insurance and the Porsche Card.



Driver's Selection by Porsche Design

With products ranging from fashion and accessories to tailored luggage, this unique collection combines quality and style with everyday practicality.

Panorama

Porsche Approved

So that our vehicles remain reliable and retain their value, we guarantee that all our Porsche Approved cars meet the most stringent Porsche quality standards, anywhere in the world. Every car is backed by the Porsche Approved warranty.

Porsche Classic

Your specialist source for genuine Porsche parts and technical documentation as well as servicing, repair and restoration for all types of classic Porsche. Find out more at www.porsche.com/classic

Christophorus

Our bi-monthly magazine for Porsche owners has news, interviews and a wide variety of features from throughout the world of Porsche.

Porsche Clubs

Since the first Porsche Club was founded in 1952, their number has grown to 640 with a total of 181,000 members worldwide. To find out more, call +49 (0)711 911-23252 or go to www.porsche.com/clubs.

Porsche Driving Experience

1. Porsche Travel Club. Exclusive driving holidays and incentive ideas combining luxury and adventure, worldwide. To find out more, call +49 (0)711 911-23360. E-mail: info@porschetravelclub.de

2. Porsche Sport Driving School.

Develop your skill and explore your Porsche with the Porsche Sport Driving School. To learn about events at some of the world's most famous racing venues, call +49 (0)711 911-23364. E-mail: sportdrivingschool@porsche.de



Ask your Porsche Centre for the latest brochures from Porsche Exclusive, Driver's Selection by Porsche Design and the Porsche Driving Experience.

Index

1							
18-inch Panamera wheels	16	Cordless handset for telephone module	47	M	Microfibre cleaning cloths	62	
18-inch Panamera S wheels	16	Crested valve caps	22	Mobile phone preparation	46		
19-inch Panamera Design wheels	16			N	Navigation update for PCM	44	
19-inch Panamera Turbo wheels	14	D	Door sill guards	44			
20-inch RS Spyder Design wheels	14	E	Electrically extending towbar system	58	O	Outdoor car cover	60
20-inch Panamera Sport wheels painted in black (high-gloss)	12	Electronic logbook	46	P	Panorama	64	
20-inch Panamera Sport wheels	10	Expansion kit for rear-mounted bike carrier	59	PCM with navigation module and CD/DVD autochanger	44		
20-inch 911 Turbo II wheels	12			PDK gear selector in Alcantara	34		
		F	Floor mats	40	PDK gear selector in aluminium	34	
A		I	Ice scraper	62	Pedals in aluminium	34	
Anti-theft wheel protection	23	Indoor car cover	60	Porsche Ceramic Composite Brake (PCCB)	26		
B		Interior materials	30	Porsche Charge-o-mat II	62		
Bike carrier	58	Interior packages	32	Porsche child seats	52		
Bi-Xenon main headlights in black incl. PDLs	8			Porsche Vehicle Tracking System (PVTS)	48		
Boat carrier	56	K	Key pouch in leather	38			
C		L	LED extended interior lighting package	35	R	Rear-mounted bike carrier	58
Car-care case	62	Luggage net	60	Reversible loadspace mat with nubuck edging	40		
Cargo liner	61			Roof boxes	54		
Cool box	60			Roof transport system	54		
Cooling compartment in the rear	38						



SportDesign package



Porsche Ceramic Composite Brake (PCCB)



Multifunction steering wheel rim in Yachting Mahogany



Ski/snowboard carrier

S	Sideskirts	8
	Ski/snowboard carrier	56
	Snow chains	22
	SportDesign package	8
	SportDesign steering wheel	36
	Sports exhaust system	26
	Sports tailpipes	26
	Sun/privacy screen	39
	Surfboard carrier	56
T	Telephone module	46
	Two fold-out cupholders above glove compartment	38
U	Universal audio interface	45
V	Vehicle key painted	36
W	Wheel accessories	22
	Wheel bolts in black including anti-theft protection	23
	Wheel cleaning kit	62
	Wheel specifications table	18
	Wireless internet access	49



Porsche strongly recommends the use of genuine Porsche parts and accessories. Porsche cannot accept liability for damages resulting from the use of third party products. Porsche reserves the right to alter specifications and other product information without notice. Colours and materials may differ from those illustrated.

Errors and omissions excepted.
Subject to change without notice.

Products may vary from market to market due to local restrictions and regulations. The models illustrated may feature optional equipment that is not included in the respective Equipment package.

For more information on selected Equipment products, see our online shop at www.porsche.com.

Porsche, the Porsche Crest, Panamera, 911, Spyder, PCM, PCCB, PDK, Tequipment and other marks are registered trademarks of Dr. Ing. h.c. F. Porsche AG
Porscheplatz 1
70435 Stuttgart, Germany
www.porsche.com
© Dr. Ing. h.c. F. Porsche AG, 2012

Edition: 06/12

Printed in Germany

WSL71301000620 EN/WW